

**Lincoln Control Valves, Meters and Accessories Provide the Durability and Precision You Need for Your Lubrication Systems.**



740

### Model 740 Heavy Duty High-Pressure

- 7500 psi maximum operating pressure
- Precision-machined, all steel handle, body and guard bracket provides durability and longevity
- Unique, precision control inlet check valve provides ease of handle operation even with increase in pressure
- Knurled handle for positive grip
- Handy trigger guard prevents pinching
- Reversible inlet check seat and hydraulic jaws provide double life
- Balanced design reduces user fatigue
- Lubricant inlet 1/4" NPT(f); outlet 1/8" NPT(f)
- Easily repaired for extended life

### Model 3050 Volume High-Pressure

Same as 740 except with 3/8" NPT(f) lubricant inlet for use with Lincoln volume high pressure swivels and hose.

### Model 82157 Repair Parts Kit

For control valves 740 and 3050.

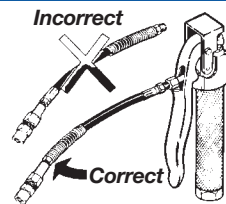
### High Pressure Grease Control Valve

Model	Description	Thread Size	Extension	Coupler
740	Heavy Duty	1/4" NPT(f)	Rigid Tube	5845
3050	Volume	3/8" NPT(f)	Rigid Tube	5845

#### WARNING

Whip Hoses Models  
3029, 3034, 5812,  
5818, 5861, 81725,  
81726, 81795

**Install as shown.**



#### WARNING

For safe and proper use, always consult instructions accompanying product. See **Safety Warning Information** for appropriate warnings.

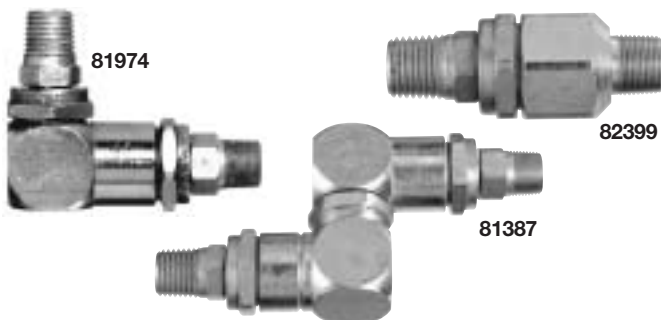
### Swivels

#### Volume High Pressure Swivels

Model	Description	Thread Size
81728	Straight	1/2" NPT(m) x 3/8" NPT(m)
82072	Straight	1/2" NPT(m) x 1/2" NPT(m)
82087	90° Angle	1/2" NPT(m) x 1/2" NPT(m)
81729	Universal	1/2" NPT(m) x 3/8" NPT(m)
82073	Universal	1/2" NPT(m) x 1/2" NPT(m)

#### Model 82158 Repair Kit

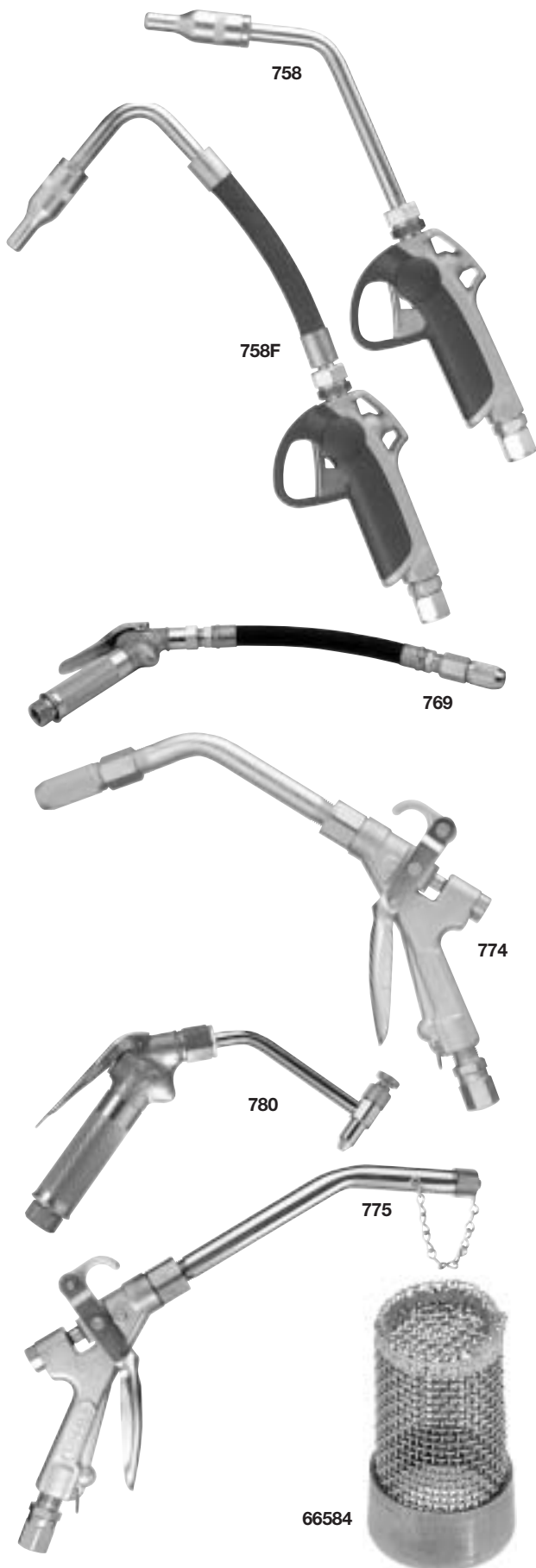
Repair Parts Kit for 81387 standard universal swivel.



### High Pressure Swivels

Model	Description	Thread Size
*81606	Straight	1/8" NPT(f) x 1/8" NPT(m)
*81703	Straight	1/8" NPT(m) x 1/8" NPT(m)
82080	Straight	1/2"-27 (m) x 1/2"-27 (m)
82399	Straight	1/2"-27 (m) x 1/4" NPT(m)
81386	90° Angle	1/2"-27 (m) x 1/8" NPT(m)
81723	90° Angle	1/8" NPT(m) x 1/8" NPT(f)
81974	90° Angle	1/2"-27 (m) x 1/4" NPT(m)
82251	90° Angle	1/8" NPT(m) x 1/8" NPT(m)
81387	Universal	1/2"-27 (m) x 1/4" NPT(m)
82252	Universal	1/8" NPT(m) x 1/8" NPT(m)
83594	Universal	1/4" NPT(m) x 1/4" NPT(m)
83938	Straight	1/4" NPT(m) x 1/4" NPT(m)

\*Whip Hose only; max. pressure 4500psi



### Heavy Duty Fluid Control Valves

These new fluid control valves provide all the benefits of the latest design technology, and offer all the features and components for a low-cost solution for your fluid dispensing needs.

- Rugged aluminum construction
- Dispenses all automotive fluids: motor oils, gear oils, transmission fluid and antifreeze
- All indoor and outdoor applications

#### Model 780

Gear oil shut-off valve for use with fluid lubricant pumps. Includes built-in swivel and 82070 non-drip nozzle extension. Inlet 1/2" NPT(f).

#### Model 769

Includes 780 valve with built-in swivel, flexible extension and 91392 nozzle.

#### Model 758

Includes 260381 rigid extension. Inlet/outlet 1/2" NPT(f). Can be locked in open position for continuous dispensing. Trigger guard prevents accidental dispensing.

#### Model 758F

Same as 758 except with 260380 flexible extension.

### Heavy Duty Volume

#### Model 774

Includes 82906 shut-off valve, pipe extension and 91392 nozzle.

#### Model 775

Includes 82906 shut-off valve and 82932 rigid extension nozzle.

#### Model 776

Includes 82906 shut-off valve and 12" flexible hose and 91392 non-drip nozzle with manual shut-off.

### Oil Control Valves

Model	Description	Inlet Thread Size	Extension	Nozzle
780	Gear Oil	1/2 NPT(f)	Rigid Pipe	82070
758	STD Volume	1/2 NPT(f)	Rigid Assembly	260381
758F	STD Volume	1/2 NPT(f)	Flex Assembly	260380
774	HD Volume	1/2 NPT(f)	Rigid Pipe	91392
775	HD Volume	1/2 NPT(f)	Rigid Pipe	82932
776	HD Volume	1/2 NPT(f)	Flex Hose	91392

#### Model 66584 Strainer

For use with 775, 776, 82906. #30 mesh, 9/16" OD.



### Electronic Lube Meters

#### Features

- Dispense motor oil, ATF, and gear lube
- One model can dispense pints, quarts, liters or gallons
- Automatic non-drip nozzle
- Narrow nozzle fits into small I.D. ATF fill tubes
- Easy to read digital display for accurate bulk dispensing
- .01 increment readout for precise measurement
- Includes inline swivel, rigid extension, automatic non-drip nozzle and inline containment filter
- Two year limited warranty

### Electronic Lube Meters

Totalizing liters or gallons. 1/2" NPT(f).

Model	Lock-On/Lock-Open	Extension	psi	gpm
905*	Rigid/ 70°/Auto nozzle	Yes	1000	5.0*
954-NEW	Flexible with auto nozzle	Yes	1500	6.0
953-NEW	Rigid/30°/Auto tip	Yes	1500	6.0
946	Rigid w/ 85799 nozzle	Yes	1500	4.0
967	Flexible w/ 84799 nozzle	Yes	1500	4.0
977	Rigid/45°swivel/Auto nozzle	Yes	1015	5.0
978**	Rigid/45°swivel/Auto nozzle	Yes	1015	5.0

\* 8.0 gpm without nondrip nozzle. \*\* Models 905 and 978 offers preset mode

### Value-Priced Electronic Lube Meters-NEW

New value-priced control valves include large digital display, shroud protector and trigger guard. 1/2" NPT(f) inlet swivel. Flexible manual nozzle or rigid auto nozzle extensions.

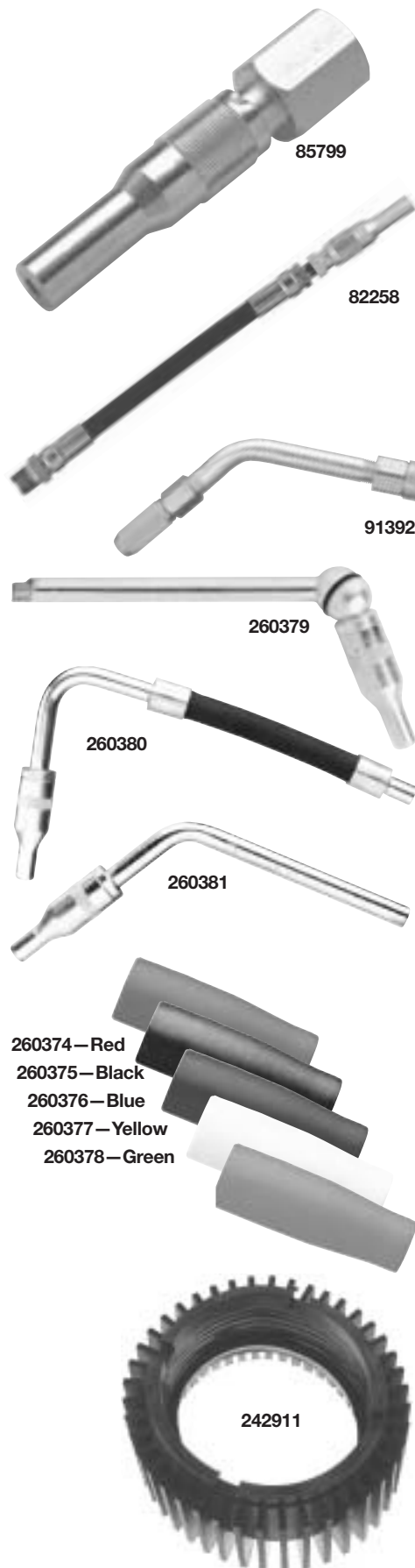
Model	Measure	Extension	psi	gpm
952-NEW	quarts	Flexible/90°manual tip	1500	6.0
957	quarts	Rigid w/ auto nozzle	1000	5.0
957F	quarts	Flexible w/ manual nozzle	1000	5.0

### Mechanical Lube Meters

Totalizing meters. 3 1/2" diameter, inlet/outlet 1/2" NPT(f).

Model	Dial Totals	Graduation	Extension	psi	gpm
<b>Oils, ATF and Antifreeze</b>					
867*	16 gallons	1/16 gallon	10" flex w/ 84799	1000	4.0
876*	16 quarts	1/4 quart	4" rigid w/ 93548	1000	4.0
877*	16 quarts	1/4 quart	10" flex w/ 84799	1000	4.0
883*	16 quarts	1/4 quart	20" flex w/ 84799	1000	4.0
68410	16 quarts	1/4 quart	None	1000	4.0
899*	10 liters	1/10 liter	10" flex w/ 84799	1000	4.0
<b>Gear Lube</b>					
878	8 pints	1/16 gallon	7" rigid w/ nozzle	1000	4.0
881	10 liters	1/4 quart	7" rigid w/ nozzle	1000	4.0
<b>Pre-set Countdown for Oils, ATF and Antifreeze</b>					
3866*	16 quarts/10 liters	1/16 gallon	Rigid w/ 93548	1000	4.0
3867*	60 quarts	1/4 quart	Rigid w/ 93548	1000	4.0
3868*	60 gallons	1/4 quart	Rigid w/ 93548	1000	4.0
3942*	60 liters	1/10 liter	Rigid w/ 93548	1000	4.0

\*Includes 90464 swivel.



**Non-Drip Nozzles & Assemblies**

**Model 93547 Nozzle**

1/4" NPT(F) inlet automatic non-drip nozzle with manual closure feature.

**Model 93548 Nozzle**

Same as 93547 with 1/2" NPT(m) inlet.

**Model 84799 Nozzle**

Packaged version of 93547.

**Model 85799 Nozzle**

Same as 84799 with 1/2" NPT (f) inlet.

**Model 91392 Nozzle**

1/2" NPT(f), manual non-drip nozzle.

**Model 82258 Assembly**

1/2" x 1/4" NPT(m), 10" hose 91241 and nozzle 93547.

**Electronic Meter Accessories**

**Model 260379**

Rigid extension outlet with patented 45° swivel for versatile fluid dispensing.

Note: Only fits models 977 and 978.

**Model 260380**

Flexible extension with non-drip valve for fluid dispensing in hard to reach areas.

Note: Only fits models 977 and 978.

**Model 260381**

Rigid extension with non-drip valve.

Note: Only fits models 977 and 978.

**Colored Swivel Guards**

Attach these flexible swivel guards to separate meters to differentiate between fluids. Available in red, black, blue, yellow and green.

**Meter Accessories**

**Model 242911 Shroud Protector**

Universal shock protector for all 3 1/2" diameter Lincoln electronic lube meters. Heavy-duty rubber cover fits easily over meter face. Order as separate accessory.

**Model 90464 Swivel**

Straight oil meter swivel, 1/2"NPT(m) x 1/2"NPT(f).



90464



961

### Model 961 High Volume Gallons

U.L. approved for gasoline and diesel fuels. Meters light-weight petroleum-base products by pump or gravity flow. Volume flow of 6 to 38 gpm. Calibrated in U.S. gallons; 1/10 gallon graduations. Straight readout to 999.9 gallons; reset knob on meter body. Non-reset totalizer on meter face. 50 psi max. pressure. 6 1/4" h, 7 1/8" w; 5 1/2 lbs. 1" NPT(f) inlet/outlet.

*NOTE: For consumer use only. Not intended for measurement where resale is contemplated.*



962

### Model 964 Liters

Same as 961, except meter is calibrated in liters. Straight readout to 999.9 liters. Maximum working pressure: 3.5 kilograms per square centimeter.

### Model 962 Volume Gallons

For oils and ATF up to SAE 40 weight. Calibrated in U.S. gallons; 1/10 gallon graduations. Straight readout to 999.9 gallons; reset knob on meter body. Non-reset totalizer on 6" diameter dial face. 1000 psi max. pressure. 1" NPT(f) inlet/outlet.

*NOTE: For consumer use only. Not intended for measurement where resale is contemplated.*

### Model 963 Liters

Same as 962, except meter is calibrated in liters.



8000

### Model 8000 Gallons

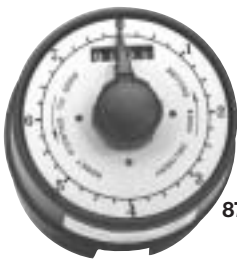
Positive displacement type 5 1/2" diameter calibrated in U.S. gallons with gallon totalizer. For oils, gear lube and ATF. Bracket mounts on the hose reel guide arm. Dial can be reset to zero, but cannot be moved forward except by pumping through meter. Total measure on dial is one gallon. 1/2" NPT(f) inlet and outlet.

### Model 8002 Liters

Calibrated and totalized in liters. Total measure on dial is four liters.

### Model 870 Pints

Dial diameter 3 1/2"; inlet 1/2" NPT(f). 1000 psi maximum working pressure.



870

### Model 871 Quarts

Calibrated and totalizes in quarts. Total measure on dial is 4 quarts.

### Model 873 Liters

Calibrated and totalizes in liters. Total measure on dial is 10 liters.



857

### Model 857 – NEW

Calibrated in quarts. Large electronic display to 999.9.

### Model 2873 Liters

Calibrated in liters. Total on dial is 4 liters.

### Inline Lube Meters

Model	Totalizing	Totals	Graduation	Max. psi
849	Yes	8 pints	1/4 pint	1000
857	Yes	999.9 qt.	.05 quart	1000
870	Yes	8 pints	1/4 pint	1000
871	Yes	4 quarts	1/4 quart	1000
873	Yes	10 liters	1/10 liter	1000
961	Yes	999.9 gal.	1/10 gallon	50
962	Yes	999.9 gal.	1/4 pint	1000
963	Yes	999.9 ltr.	1/10 liters	1000
964	Yes	999.9 ltr.	1/10 liters	50
2873	No	4 liters	1/10 liter	1000
8000	Yes	1 gallon	1/4 pint	1000
8002	Yes	4 liters	1/4 quart	1000



840

### Blow Guns

#### Model 840

- Handy thumb-button design provides ease of operation
- Brass stem and synthetic packaging for service life
- Addition of air nipple permits quick connect or disconnect
- Inlet 1/4" NPT(f); outlet 7/64" diameter



960

#### Model 950

- Same as 840, except with air restricter
- Nozzle inlet pressure 30 psi maximum complies with Federal Safety Regulation 50-204.8 and OSHA 1910 242.B.

#### Model 960

- Light-weight cast aluminum pistol grip
- Inlet 1/4" NPT(f); outlet 7/64" diameter; height 5 3/4"
- Nozzle inlet pressure 30 psi maximum complies with Federal Safety Regulation 50-204.8 and OSHA 1910 242.B.



5980

#### Model 940

- Same as 960 less air restricter
- When used for large cleaning requirement or chip cleaning, regulated air pressure must not exceed Federal recommended maximum.

#### Model 5980

- Thumb control provides comfort and ease of operation
- Inlet 1/4" NPT(f); outlet 1/8" NPT(f) outlet

### Adjustable Pocket Blow Gun

#### Model 5982 Lincoln Style

- Built-in quick-coupler nipple; 1/4" coupler connection
- Twist turn off and on
- Standard safety by-pass



5982

#### Model 5990 Rubber Tip for Blow Guns

- Rubber tip will not scratch surfaces.
- Fits 840, 940 and 5980 blow guns, as well as many competitive models.
- 1/8" NPT(m) threads.



5990

### Air & Water Accessories

#### Model 846 Water Bibb Cock

For attaching to water service hose.

- 1/4" NPT(f) inlet.
- Thumb-action trigger. Built-in strainer filters out contaminants.



846

#### Model 845 Water Bibb Cock

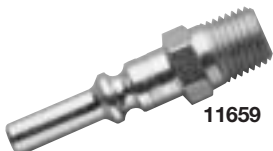
Same as 846 except inlet 3/4"-1 1/2" AN connects to standard lawn hose.



815



66951



11659

### Air/Water Accessories

Model	Description	Style
815	1/4"(f) Air Coupler	Lincoln "Long Stem"
845	Inlet 3/4" -1 1/2" AN	Connects to standard lawn hose
846	1/4"(f) Water Bibb Cock	Low pressure water
11659	1/4"(m) Air Nipple	Lincoln "Long Stem"
66951	1/4"(f) Tire Chuck	Standard tire chuck



4030

### Model 4030

This inline design, 6 product console is compact—the perfect dispensing station for “between the bays” installations which allows servicing of two vehicles from one location. Heavy-duty welded lower cabinet construction is finished in safety red. Metering control valves rest on top of the console in the meter cradle, eliminating the need for ball stops on oil products. Air or water hoses rest in small O.D. hose brackets which require a ball stop. Hoses gravity feed through the floor into the fast oil change basement or pit area.

The inline console includes composite hose guide plates and a composite meter cradle which:

- Are constructed of self-lubricating composite material—hoses glide over easily
- Replaces rollers—no rollers are needed
- Does not require maintenance
- Two small OD hose brackets are included with each 4030 console

### Specifications

Dimensions	Capacity
42"L x 12 <sup>5</sup> / <sub>8</sub> "W x 36"H	6 products

*Hoses, meters, control valves and ball stops (required for non-metered products only) are available separately.*



84959

### Oil Bar Assembly

#### Model 84959

Includes single delivery spigot for dispensing motor oil, ATF and other fluids. Base unit may be expanded two additional positions by adding spigot kits, meters or other accessories. Removable tray for disposal of spillage; 14 gauge steel.

#### Model 84957 Oil Bar Spigot Kit

To add products to base model 84959, order one spigot kit for each additional product to be dispensed. Includes hardware and 84956 bulkhead fitting kit.



84950

### Oil Spigots

#### Model 84950

Spring-loaded oil spigot is used with oil pumps to dispense fluids into oil crankcase fill cans. 1/2" NPT(m).